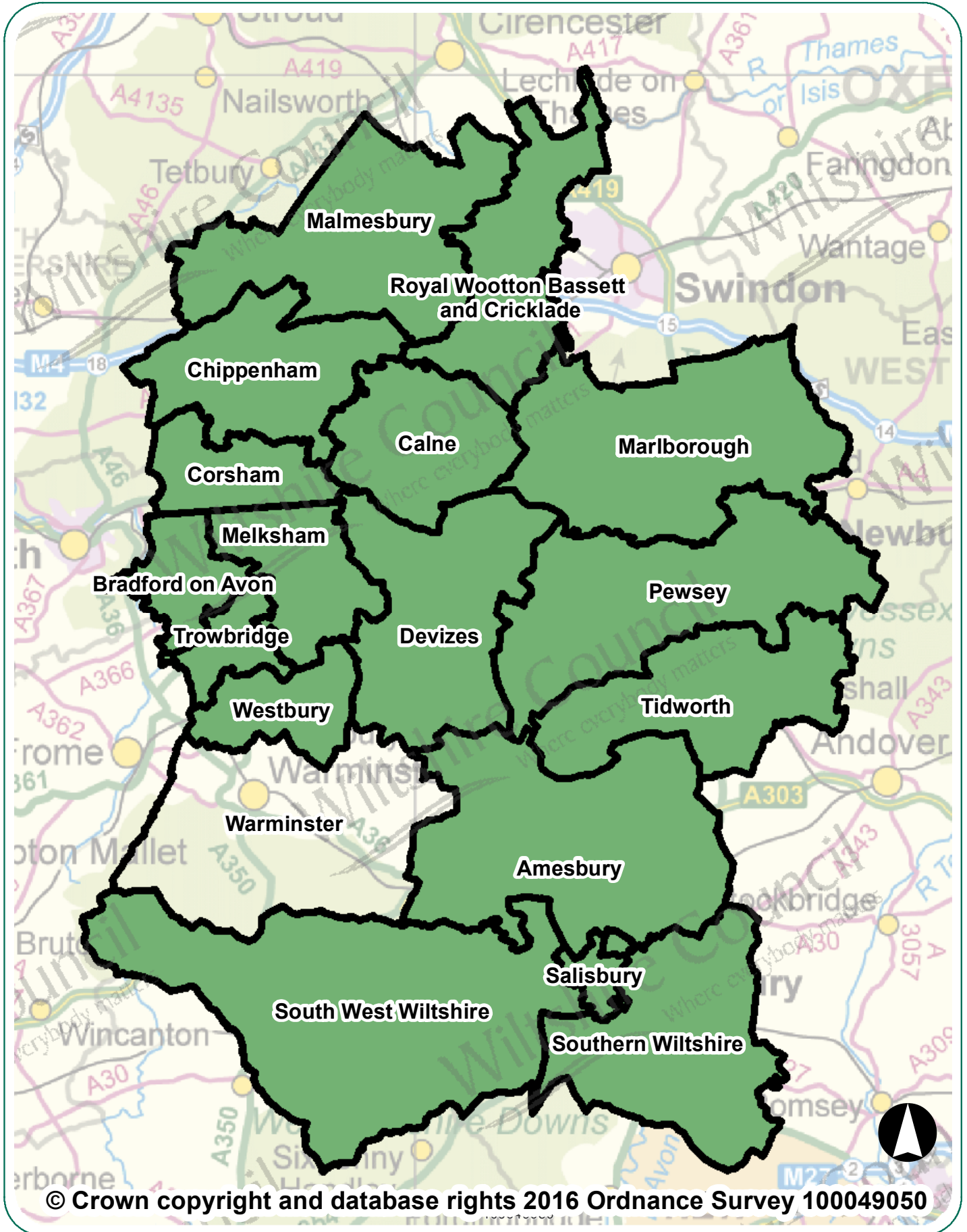


# Warminster Area Board Highway Information



# Warminster Area Board Highway Information

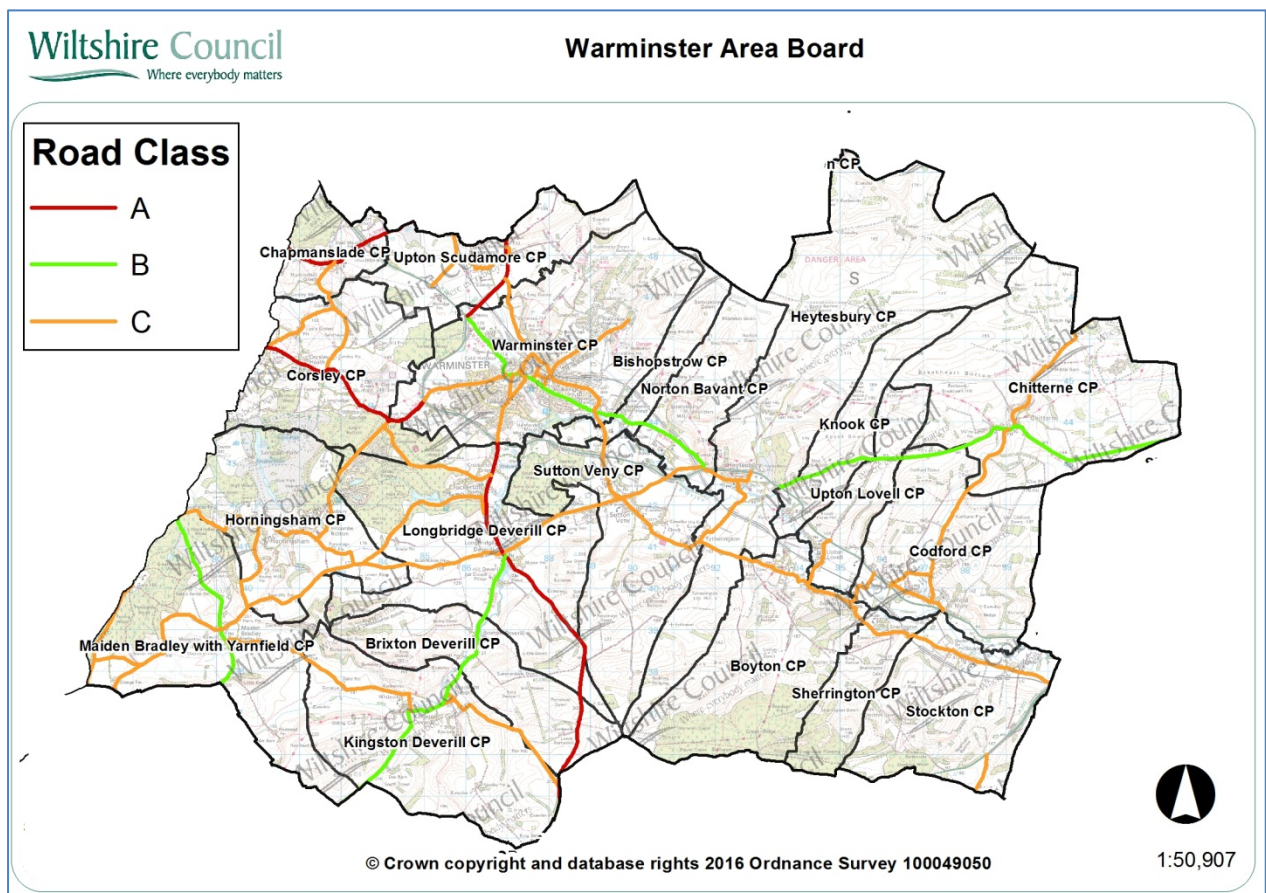
## Introduction

This document summarises highway information for your area board. It lists the recent highway and related work carried out by Wiltshire Council, including the road resurfacing carried out during the first two years of the 'Local Highways Investment Fund 2014 – 2020', and includes other information which should be of interest.

Further information on the Council's activities is available at the website [www.wiltshire.gov.uk](http://www.wiltshire.gov.uk). If you wish to report a specific highway issue please use My Wiltshire. Details are provided at the end of this document.

## Parishes in the community area are:

Warminster, Chapmanslade, Corsley, Horningsham, Kingston Deverill, Brixton Deveril, Longbridge Deverill, Upton Scudamore, Sutton Veny, Bishopstrow, Norton Bavant, Heytesbury, Knook, Boyton, Upton Lovell, Sherrington, Stockton, Codford, Maiden Bradley with Yarnfield, Chitterne



## Network statistics in your area

### Road length by class

Road type	Urban (km)	Rural (km)
A Class Roads	5.29	13.80
B Class Roads	10.27	17.96
C Class Roads	31.38	71.48
Unclassified Roads	70.80	50.61
<b>Total</b>	<b>117.74</b>	<b>153.85</b>
	<b>Overall Total</b>	<b>271.59</b>

The council categorises its roads to reflect their importance. This enables an effective assignment of highway inspection frequencies and maintenance standards.

### Highway assets in your area

The council keeps an inventory of its highway assets in order to assist planning its highway maintenance. Important statistics relating to your board area are:

Asset Type	Measure
Carriageway	271.59 km
Footways adjacent to road	113 km
Footways (linked)	10.25 km
White road centre lines	128 km
Road kerbs	147 km
Grass verge (maintained)	415 km
Drainage grips	894 number
Drainage pipe grips	102 number
Drainage gullies	4, 143 number
Road signs	2, 419number
Street lights	2, 745 number

## **Major highway maintenance**

### **Road resurfacing**

Wiltshire has over 3,000 miles of road. The Council's 'Local Highways Investment Fund 2014 – 2020' is making a massive investment to improve the condition of the roads in Wiltshire over six years. The programme of work started in April 2014, and is designed and supervised by the Council's consultants Atkins, with the work carried out by our main highway contractors Tarmac and Eurovia.

The work carried out in the first two years of the programme has improved a considerable number of the roads in previously poor condition. The locations of sites treated in recent years are shown below.

### **Carriageway repairs**

As well as resurfacing roads other works are undertaken to make localised repairs to keep the roads safe. The works undertaken in your area since 2014 are shown on the map below.

The wet winter and flooding in previous years has resulted in substantial damage to the road network. It is important that serious defects are treated promptly to keep the roads safe. The Council currently operates four Pothole teams that respond to urgent issues to keep the roads safe.

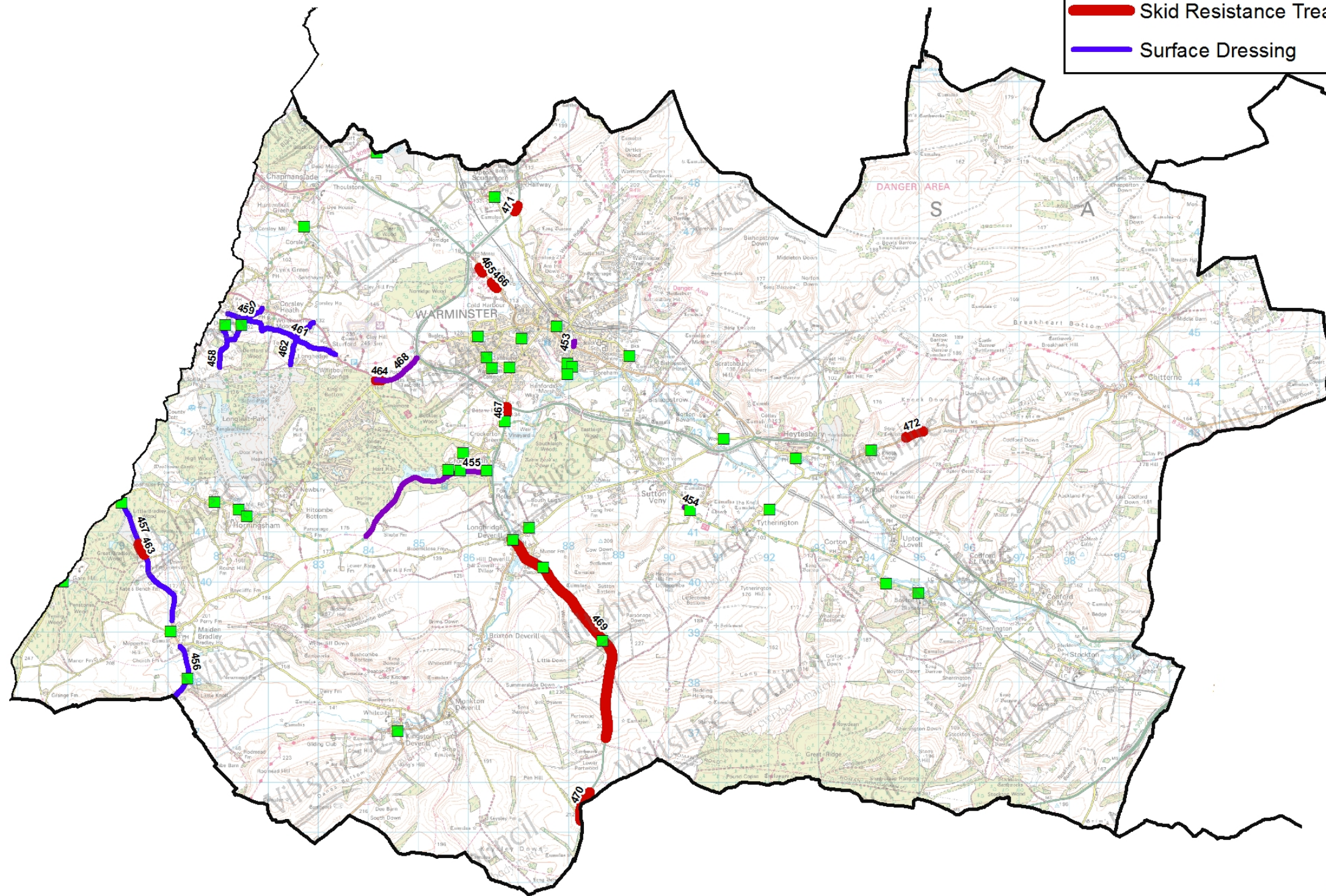


Plan showing major maintenance schemes & hand/machine patching sites completed since 2014



Warminster Area Board

- Hand/Machine Patching
- Resurfacing
- Skid Resistance Treatments
- Surface Dressing



1:50,882

© Crown copyright and database rights 2016 Ordnance Survey 100049050

**Major maintenance completed since 2014**

No	Location	Works
453	Chancery Lane	Resurfacing
454	Springhead	Resurfacing
455	C54 Clay Street Shearwater (Warminster CAB)	Resurfacing
456	B3092 junction with Rodmead Farm Lane north to Church Street, Maiden Bradley	Surface Dressing
457	Frome Road B3092 junction Bradley Road north to junction Forest Road	Surface Dressing
458	The Stalls, Corsley	Surface Dressing
459	Unnamed road junction Geys Hill to Whitbourne Moor	Surface Dressing
460	Unnamed road, Derfords junction with Lands End Hill A362	Surface Dressing
461	Sturford Lane, Whitbourne Moor to junction Lands End Hill A362	Surface Dressing
462	Longhedge into Syndalls Lane to junction Lands End Hill A362	Surface Dressing
463	Unclassified Road Mill Lane To County Boundary	Skid Resistance Improvements
464	Picket Post Roundabout To A36 Rbt Warminster	Skid Resistance Improvements
465	A36 Bath Road Roundabout To Furnax Lane (Warminster)	Skid Resistance Improvements
466	A36 Bath Road Roundabout To Furnax Lane (Warminster)	Skid Resistance Improvements
467	End Dual Carriageway N/Bound To Warminster Bypass Rbt	Skid Resistance Improvements
468	A362 Picket Post Rbt to Warminster Bypass (Warminster CAB)	Resurfacing
469	A350 Longbridge Deverill	Skid Resistance Improvements
470	A350 at Pertwood Manor Farm, Brixton Deverill	Skid Resistance Improvements
471	A350 Warminster Road, Upton Scudamore	Skid Resistance Improvements
472	B390 Camp Road, Knook	Skid Resistance Improvements

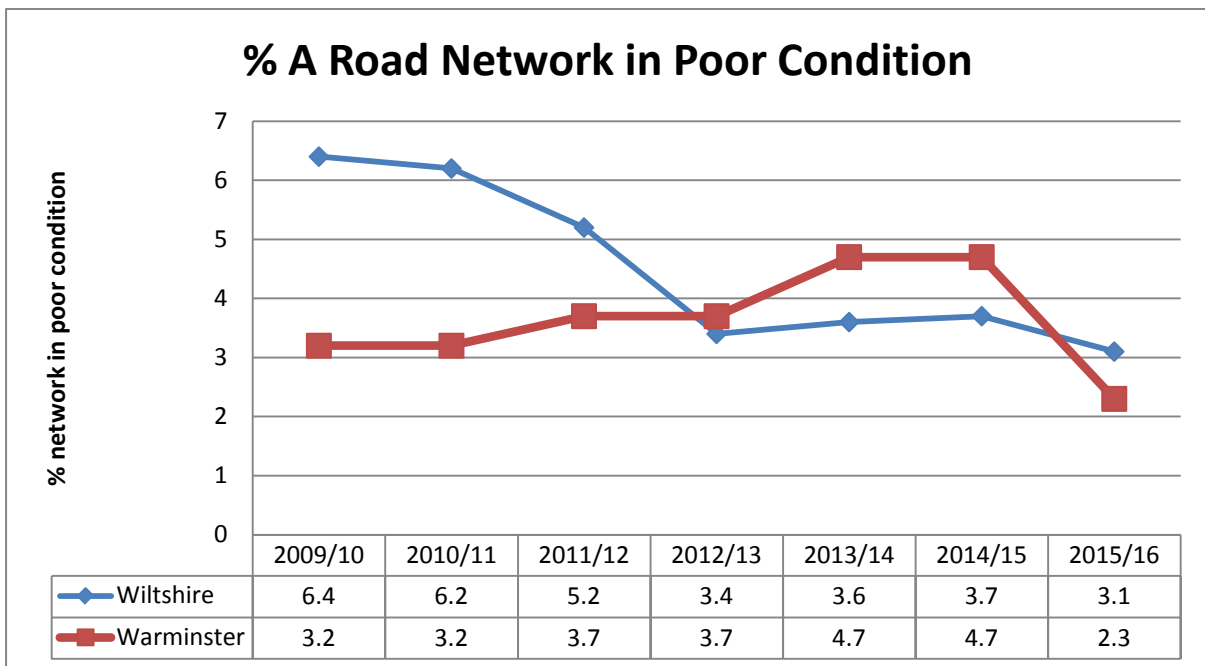


## Highway conditions and technical surveys in your area

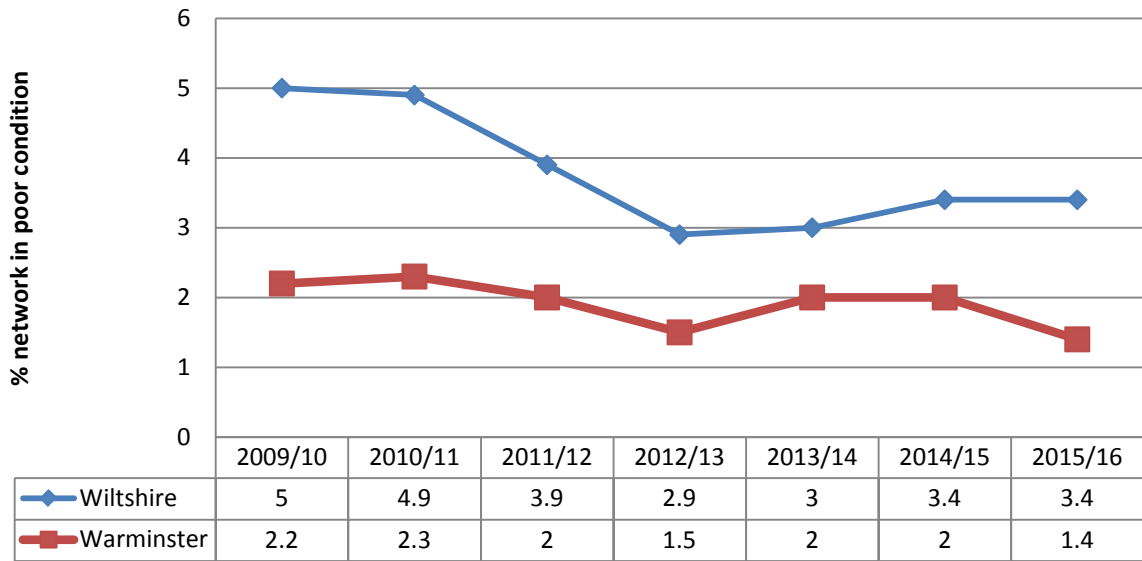
Roads deteriorate in condition because of various factors, including traffic volumes, ground conditions, and weather and drainage issues. Technical surveys of the condition of the highway network are carried out annually and the information is used to help prioritise schemes. Road safety is the priority, and maintaining adequate skid resistance on the busy high speed roads is vital.

The surveys include the use of a vehicle equipped with lasers and cameras to record road surface condition, which allows us to report on road conditions to the Department for Transport and to prioritise maintenance work. Other surveys include measuring skid resistance on the busier roads.

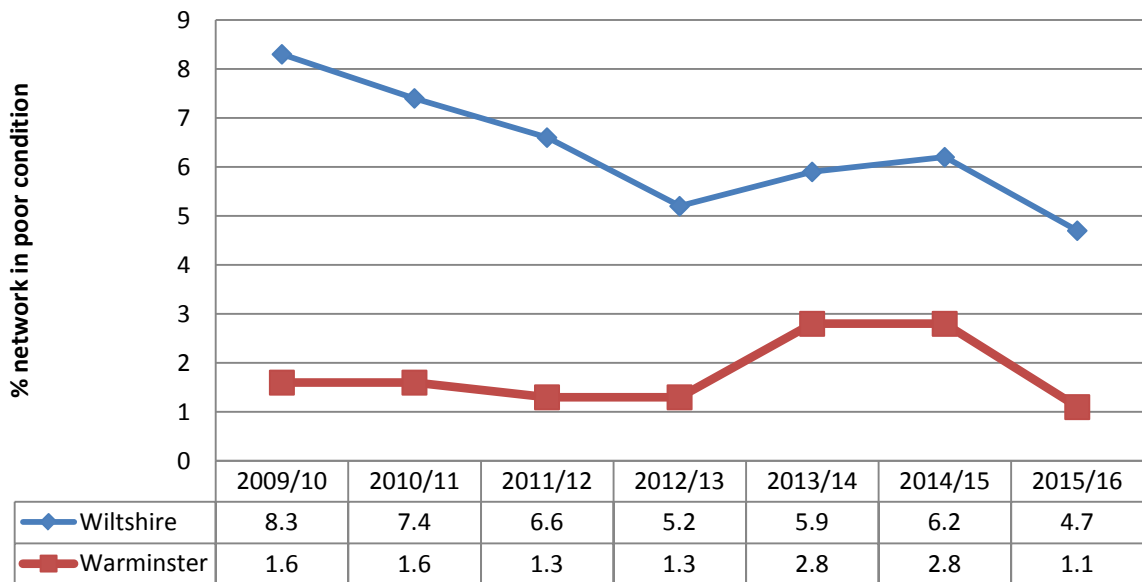
The road conditions in your area are shown below. It should be noted that low numbers are good because it indicates that less road length should be considered for treatment. More detailed information is shown in Appendix A.



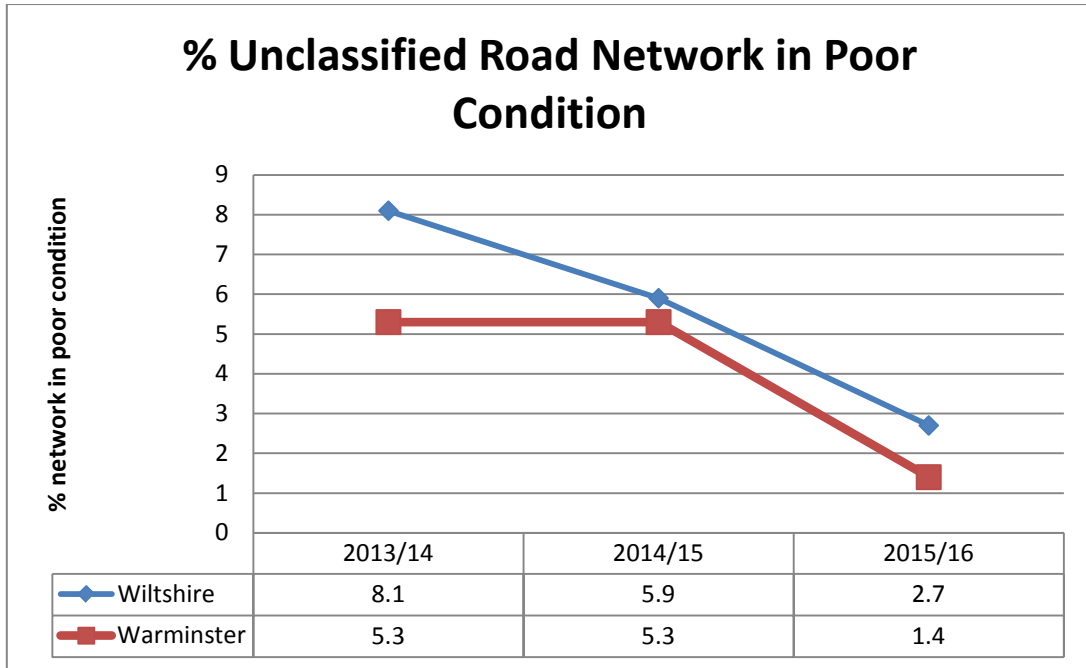
### % B Road Network in Poor Condition



### % C Road Network in Poor Condition







## Integrated transport, bridge and drainage works

### Integrated transport

The Council's traffic engineering team work with our contractors to plan and deliver a range of projects to the local community, most notably through the Area Boards and Community Area Transport Groups (CATGs). The schemes range in size and complexity from simple sign installation through to more complex road safety and improvement schemes.

### Bridges

The Council regularly inspects its bridges and other highway structures. There is a programme of renewal and refurbishment works to keep them in good condition, as well as having to respond to damage caused by collisions.

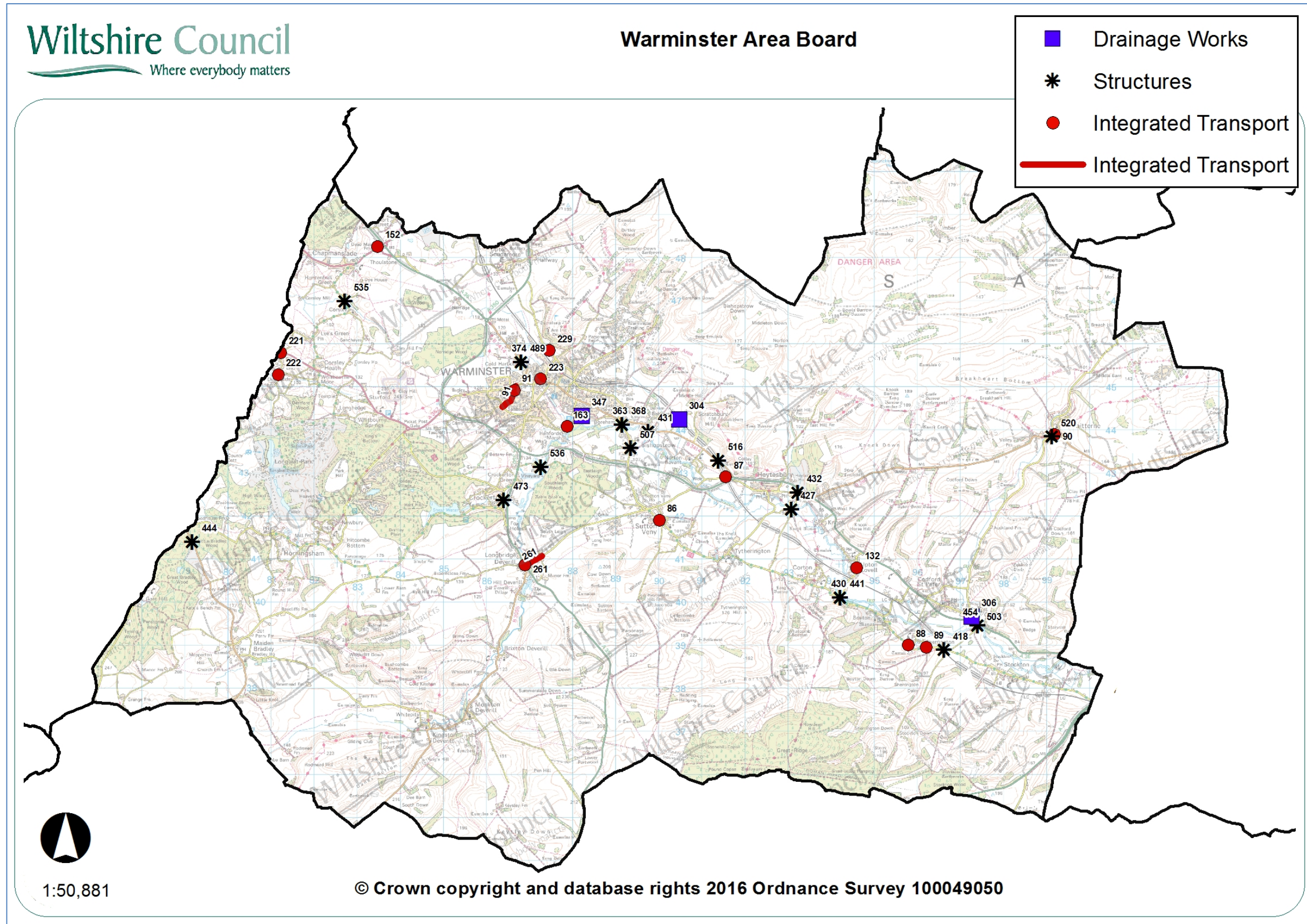
### Drainage

Programmes of drainage investigations, repairs and flood alleviation schemes are undertaken throughout the year, but the flooding in recent years has meant that there has been a need to respond immediately to flooding issues, as well as dealing with previously identified problem sites. The drainage improvement and flood alleviation work is co-ordinated through the Council's Operational Flood Working Groups that include the Environment Agency, Wessex Water, other organisations and stakeholders.

### Recent work in your area

The Integrated Transport, Bridge and Drainage schemes carried out in your area since 2015 are listed below.

Plan showing completed integrated transport, bridge and drainage schemes since 2015





**Integrated transport schemes since 2015**

No	Location	Description
221	C274 & C275	Speed limit assessments
222	Corsley	Geys Hill passing bay
223	Warminster	Portway / George Street bollards
229	Warminster	Portway Lane Cyclepath
261	Longbridge Deverell	Sand Street signing
86	Sutton Veny	High Street road markings
87	Warminster	Cotley Hill by bridge signs and road markings
88	Sherrington	Slow road markings
89	Sherrington	Slow road markings
90	Chitterne	B390 Tilshead Junction improvements (Bidden Lane)
91	Warminster	Pound street & Boreham Road waiting restrictions
132	Upton Lovell	Removal of unauthorised tourism signs to Prince Leopald
152	A398 Chapmanslade	New 18t Weight Limit - signs only
163	Warminster	Smallbrook - Toad warning sign

**Bridge schemes since 2014**

<b>No</b>	<b>Location</b>	<b>Description</b>
363	Warminster	Boreham Mill bridge. Repair to parapet following RTC
368	Warminster	Boreham Mill Warminster Repair parapet following RTA
374	Warminster	Cold Harbour Parapet repair
418	Sherrington	Incursion work - Sherrington
427	Heytesbury	Mill 2nd Footbridge Heytesbury. Replace parapet post
430	Boyton	Suffers Bridge Upton Lovell, Preorder concrete beams
431	Bishopstrow	Bishopstrow Mill Bridge, remove extension slab
432	Heytesbury	Heytesbury Lodge, Repair arch barrel, resite drainage gully
441	Boyton	Suffers Bridge Upton Lovell - Redecking
444	Maiden Bradley with Yarnfield	Bradley Water 2nd Bridge Vegetation Clearance`
454	Codford	Giggan St Bridge Codford St Mary. Repair parapet following RTA
473	Longbridge Deverill	Poole Bridge, Shrewton, repointing
489	Warminster	Cold Harbour parapet repair
503	Codford	Giggan street parapet repair
507	Bishopstrow	Eastleigh retaining wall repairs
516	Norton Bavant	Norton Bavant Trial Holes
520	Chitterne	Clump Packhorse, Chitterne
535	Corsley	Divers bridge, Parapet Repair
536	Sutton Veny	Five ash lane, Vegetation clearance



**Drainage works since 2015**

<b>No</b>	<b>Location</b>	<b>Description</b>
304	Warminster	Culvert reconstruction
306	Warminster	Lowering footpaths and accesses
347	Warminster	Refurbishment of soakaway

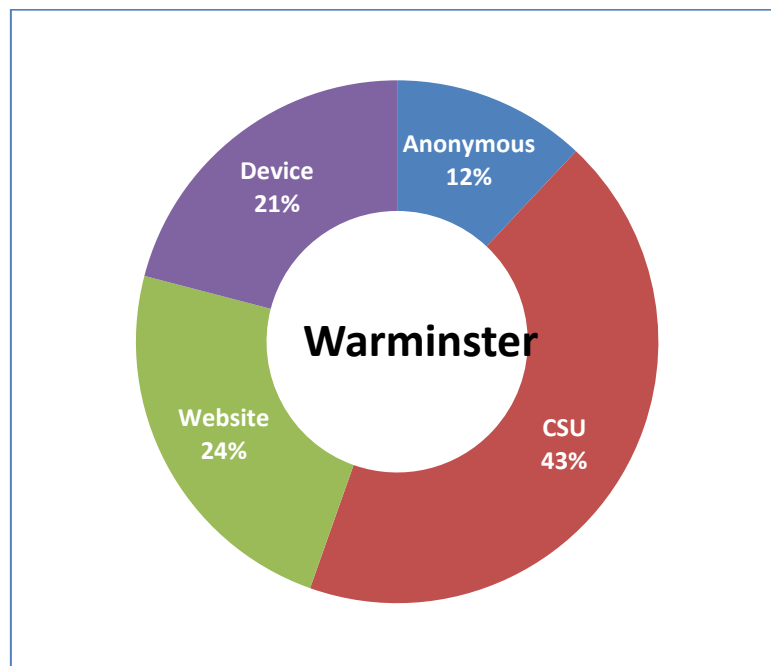
## My Wiltshire



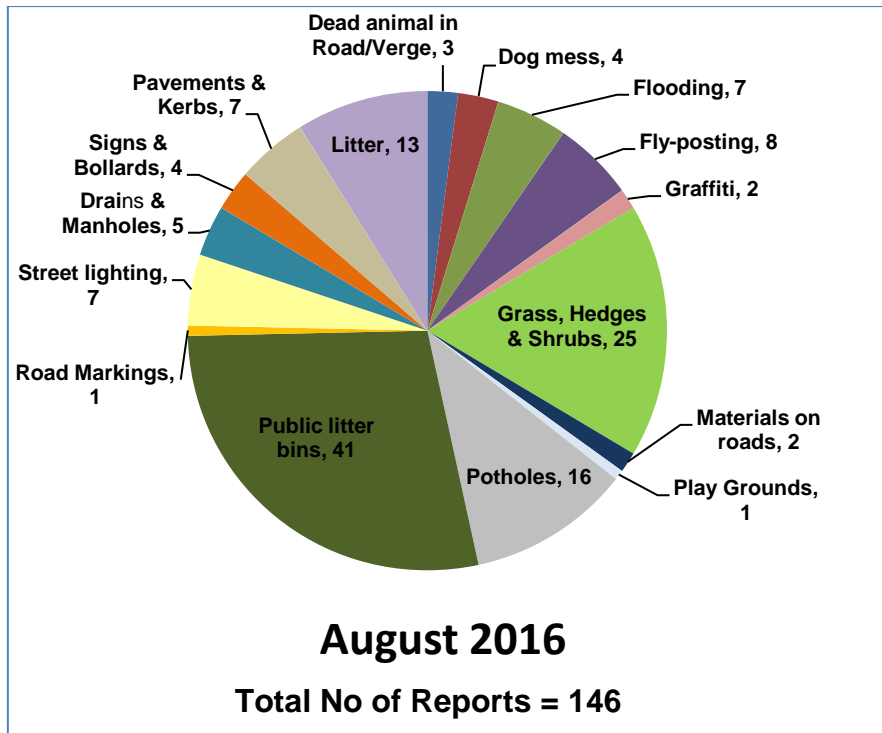
My Wiltshire provides an easy way to report highway issues, including using the Council's website. We have an app so you can report on the go using your smartphone. The My Wiltshire app is available to download at both the [App Store](#) (for iPhones and iPads), from [Google Play](#)<sup>™</sup> (for Android phones) and Windows Store. You can attach information such as photos or videos and pinpoint the location of your report using the mapping software on your phone.

A summary of recent reports in your area is shown below, and further details are shown in Appendix B.

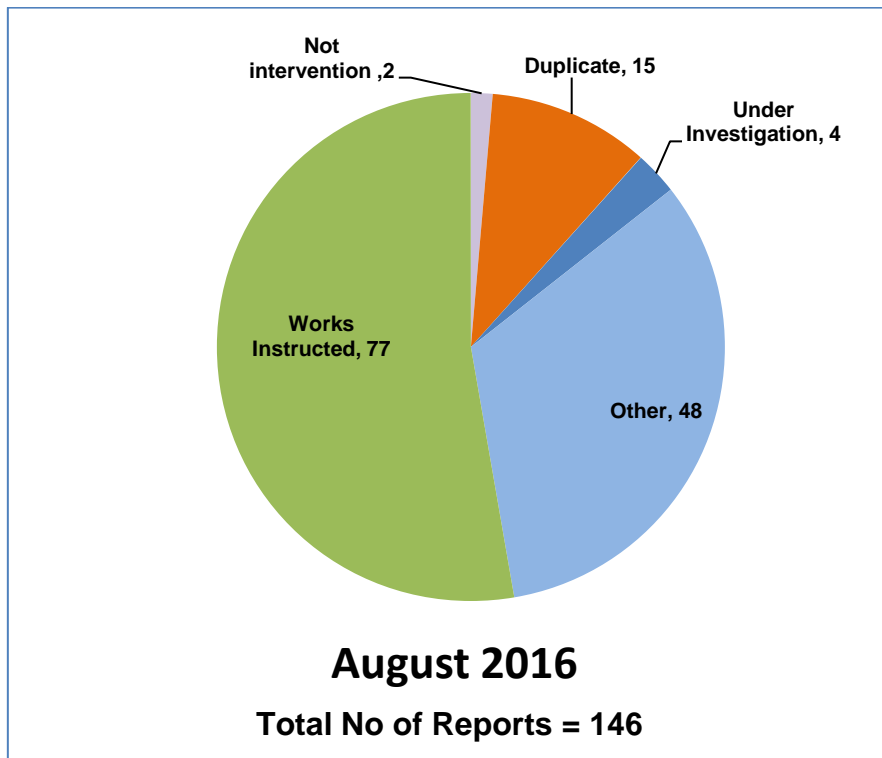
### Customer reporting methods in your area



### Customer reports in your area for the month of August 2016



### Actions following recent reports in your area

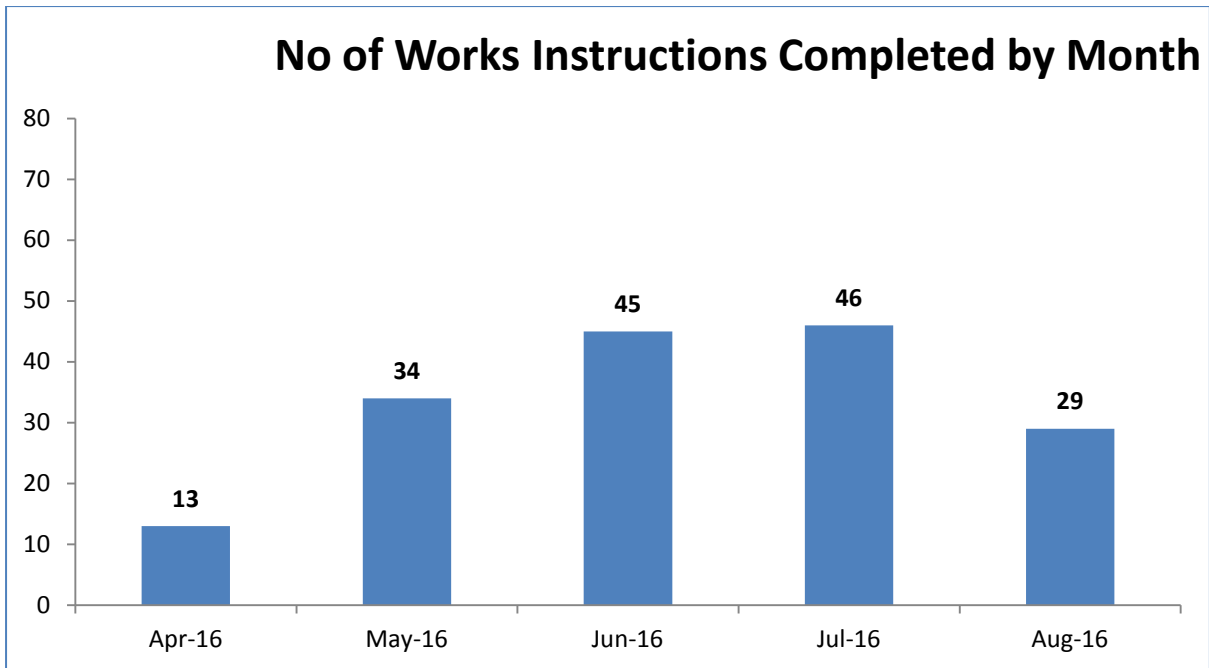


## Action definitions

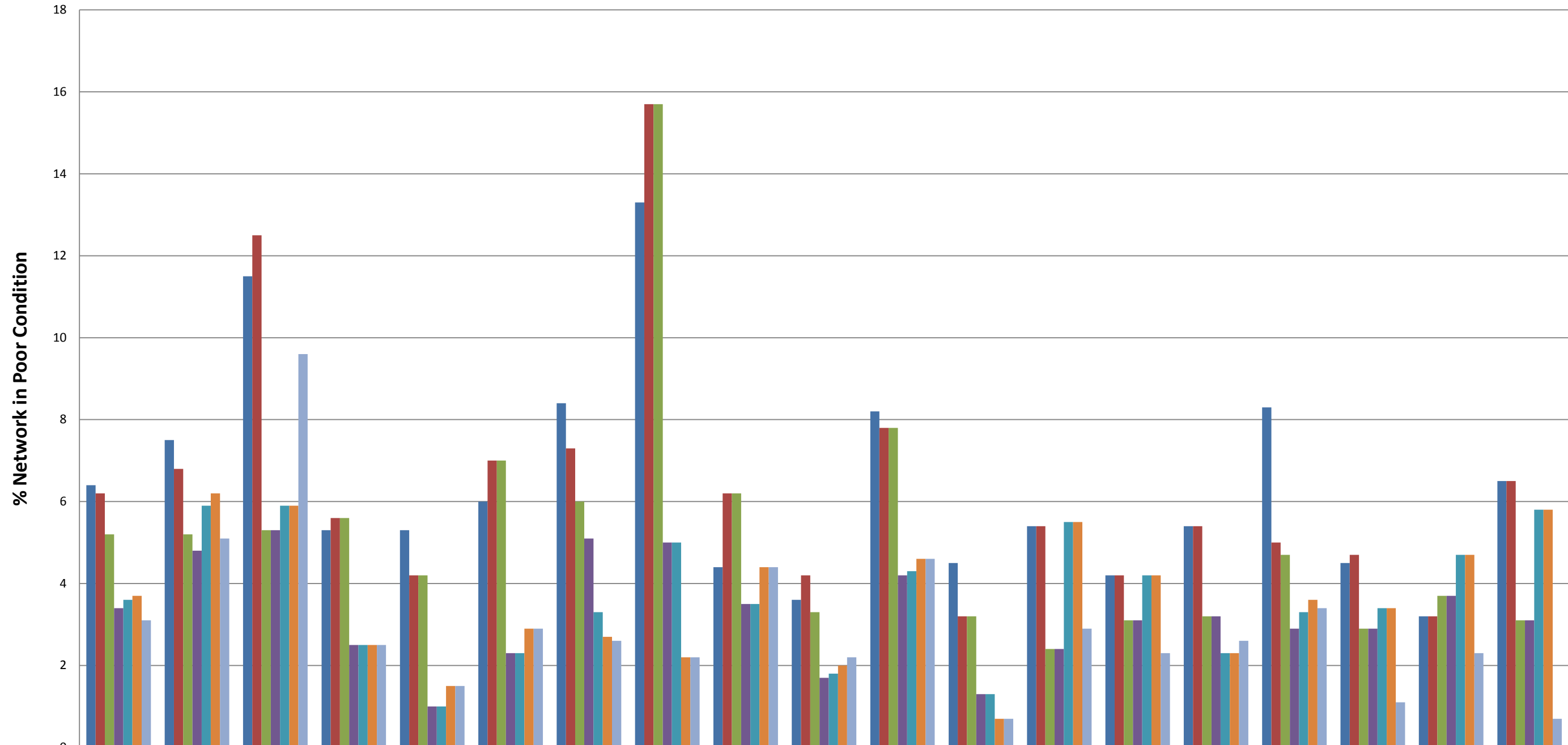
1. **Not Intervention** – the technician has attended site and classified the defect as not meeting intervention levels as per the Highway Inspection Manual 2013 or in the case of streetscene reports, service level agreements.
2. **Duplicate** – a report has already been received in relation to this issue and a works instruction has previously been passed to the contractor to undertake a repair/carry out the necessary works.
3. **Under Investigation** – this issue is currently with a Highways technician or engineer – they may be awaiting information from the customer or the issue requires further investigation e.g. wet weather inspection, drainage survey, exploratory excavation, ownership query.
4. **Discretionary works** – this issue is not a highway safety issue and has been identified as one which falls within the remit of the parish steward scheme.
5. **Other** – the issue has been identified as one which does not require any action by Local Highways. This could be for a number of reasons –
  - the report has been cancelled by the user,
  - there is insufficient information provided to assess the issue and the customer has not provided contact details,
  - the issue is not the responsibility of Wiltshire Council e.g. un-adopted highway, gas/electricity/telephone/water/cable company, Highways England, housing association,
  - the technician attended site and nothing was found at the stated location
  - the issue has been passed to another service within Wiltshire Council e.g. rights of way, bridges.
6. **Works Instructed** – the technician has assessed the issue as requiring works to be carried out and has either dealt with the issue personally or has referred it to the contractor for repair.



Highway defects completed in your area in recent months

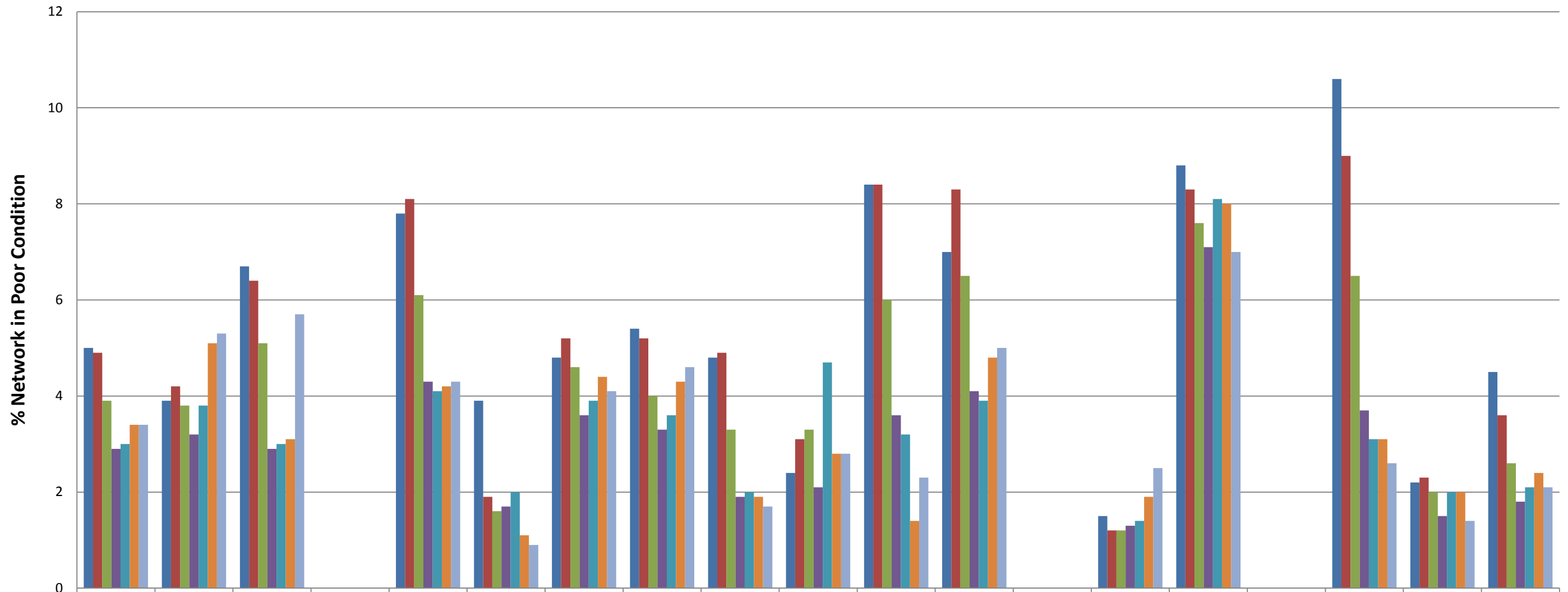


**% A Road Network in Poor Condition**



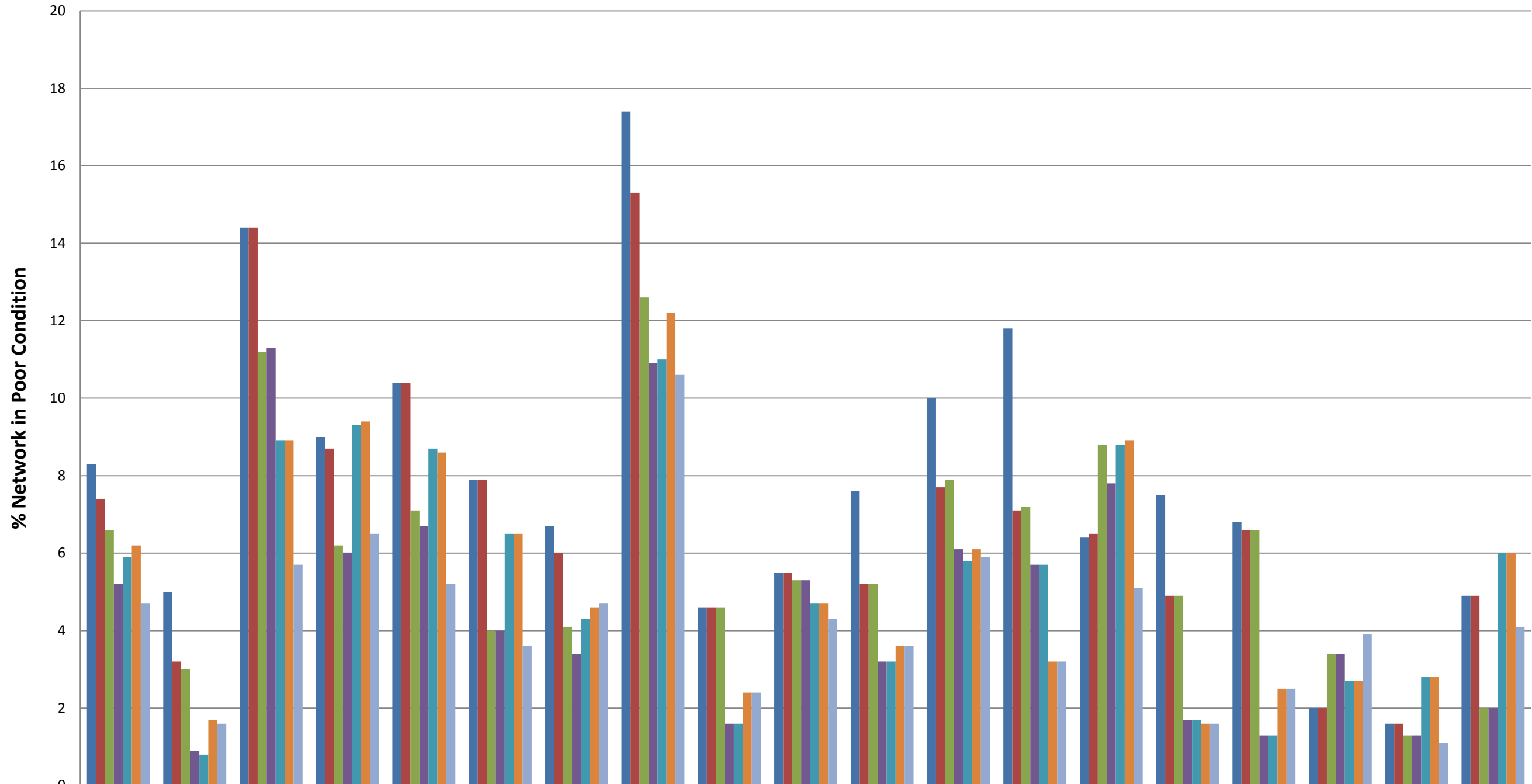
	Wiltshire	Amesbury	Bradford On Avon	Calne	Chippenham	Corsham	Devizes	Malmesbury	Marlborough	Melksham	Pewsey	Royal Wootton Bassett & Cricklade	Salisbury	South West Wiltshire	Southern Wiltshire	Tidworth	Trowbridge	Warminster	Westbury
■ 2009/10	6.4	7.5	11.5	5.3	5.3	6	8.4	13.3	4.4	3.6	8.2	4.5	5.4	4.2	5.4	8.3	4.5	3.2	6.5
■ 2010/11	6.2	6.8	12.5	5.6	4.2	7	7.3	15.7	6.2	4.2	7.8	3.2	5.4	4.2	5.4	5	4.7	3.2	6.5
■ 2011/12	5.2	5.2	5.3	5.6	4.2	7	6	15.7	6.2	3.3	7.8	3.2	2.4	3.1	3.2	4.7	2.9	3.7	3.1
■ 2012/13	3.4	4.8	5.3	2.5	1	2.3	5.1	5	3.5	1.7	4.2	1.3	2.4	3.1	3.2	2.9	2.9	3.7	3.1
■ 2013/14	3.6	5.9	5.9	2.5	1	2.3	3.3	5	3.5	1.8	4.3	1.3	5.5	4.2	2.3	3.3	3.4	4.7	5.8
■ 2014/15	3.7	6.2	5.9	2.5	1.5	2.9	2.7	2.2	4.4	2	4.6	0.7	5.5	4.2	2.3	3.6	3.4	4.7	5.8
■ 2015/16	3.1	5.1	9.6	2.5	1.5	2.9	2.6	2.2	4.4	2.2	4.6	0.7	2.9	2.3	2.6	3.4	1.1	2.3	0.7

### % B Road Network in Poor Condition



	Wiltshire	Amesbury	Bradford On Avon	Calne	Chippenham	Corsham	Devizes	Malmesbury	Marlborough	Melksham	Pewsey	Royal Wootton Bassett & Cricklade	Salisbury	South West Wiltshire	Southern Wiltshire	Tidworth	Trowbridge	Warminster	Westbury
■ 2009/10	5	3.9	6.7	0	7.8	3.9	4.8	5.4	4.8	2.4	8.4	7	0	1.5	8.8	0	10.6	2.2	4.5
■ 2010/11	4.9	4.2	6.4	0	8.1	1.9	5.2	5.2	4.9	3.1	8.4	8.3	0	1.2	8.3	0	9	2.3	3.6
■ 2011/12	3.9	3.8	5.1	0	6.1	1.6	4.6	4	3.3	3.3	6	6.5	0	1.2	7.6	0	6.5	2	2.6
■ 2012/13	2.9	3.2	2.9	0	4.3	1.7	3.6	3.3	1.9	2.1	3.6	4.1	0	1.3	7.1	0	3.7	1.5	1.8
■ 2013/14	3	3.8	3	0	4.1	2	3.9	3.6	2	4.7	3.2	3.9	0	1.4	8.1	0	3.1	2	2.1
■ 2014/15	3.4	5.1	3.1	0	4.2	1.1	4.4	4.3	1.9	2.8	1.4	4.8	0	1.9	8	0	3.1	2	2.4
■ 2015/16	3.4	5.3	5.7	0	4.3	0.9	4.1	4.6	1.7	2.8	2.3	5	0	2.5	7	0	2.6	1.4	2.1

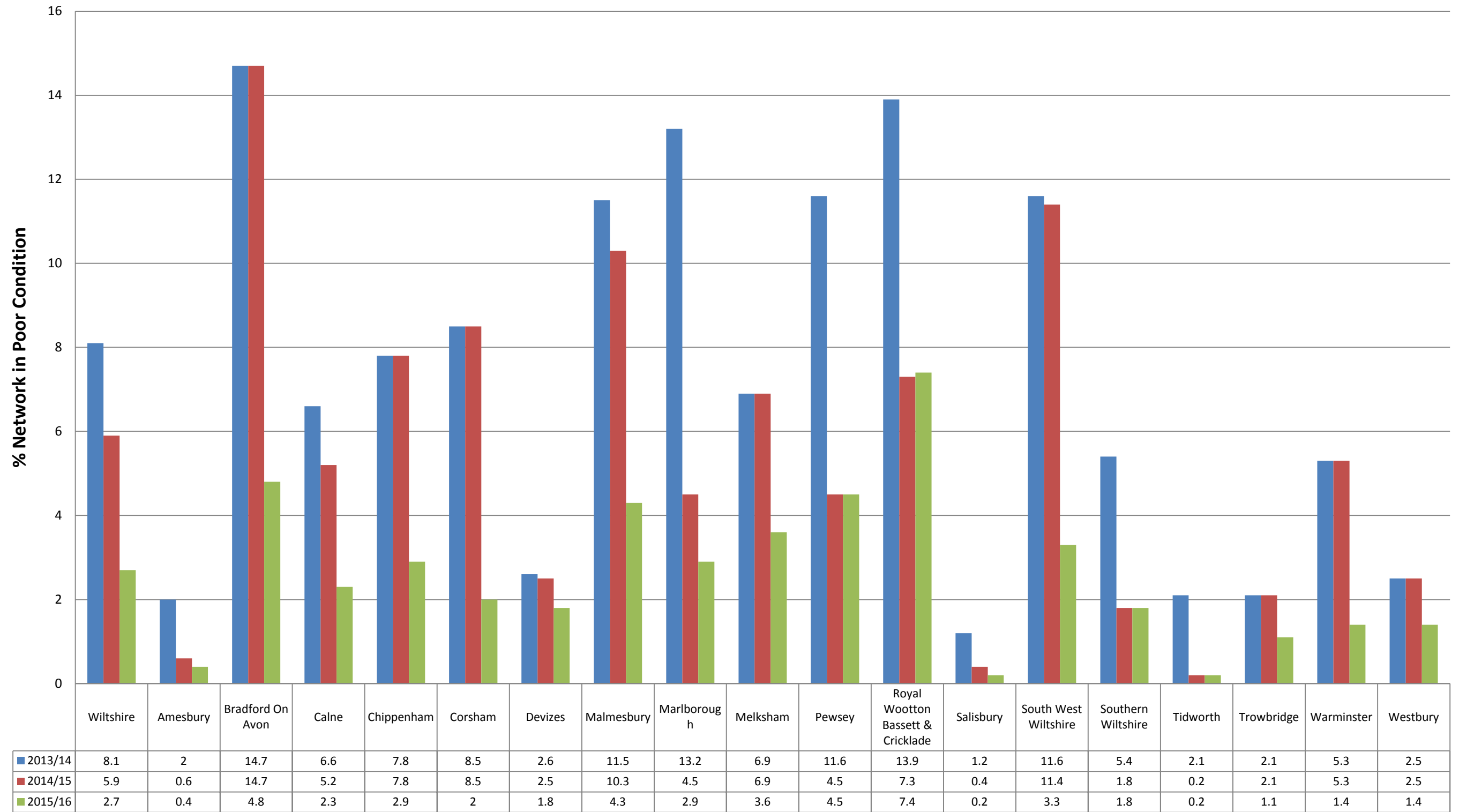
### % C Road Network in Poor Condition



	Wiltshire	Amesbury	Bradford On Avon	Calne	Chippenham	Corsham	Devizes	Malmesbury	Marlborough	Melksham	Pewsey	Royal Wootton Bassett & Cricklade	Salisbury	South West Wiltshire	Southern Wiltshire	Tidworth	Trowbridge	Warminster	Westbury
2009/10	8.3	5	14.4	9	10.4	7.9	6.7	17.4	4.6	5.5	7.6	10	11.8	6.4	7.5	6.8	2	1.6	4.9
2010/11	7.4	3.2	14.4	8.7	10.4	7.9	6	15.3	4.6	5.5	5.2	7.7	7.1	6.5	4.9	6.6	2	1.6	4.9
2011/12	6.6	3	11.2	6.2	7.1	4	4.1	12.6	4.6	5.3	5.2	7.9	7.2	8.8	4.9	6.6	3.4	1.3	2
2012/13	5.2	0.9	11.3	6	6.7	4	3.4	10.9	1.6	5.3	3.2	6.1	5.7	7.8	1.7	1.3	3.4	1.3	2
2013/14	5.9	0.8	8.9	9.3	8.7	6.5	4.3	11	1.6	4.7	3.2	5.8	5.7	8.8	1.7	1.3	2.7	2.8	6
2014/15	6.2	1.7	8.9	9.4	8.6	6.5	4.6	12.2	2.4	4.7	3.6	6.1	3.2	8.9	1.6	2.5	2.7	2.8	6
2015/16	4.7	1.6	5.7	6.5	5.2	3.6	4.7	10.6	2.4	4.3	3.6	5.9	3.2	5.1	1.6	2.5	3.9	1.1	4.1



### % Unclassified Road Network in Poor Condition



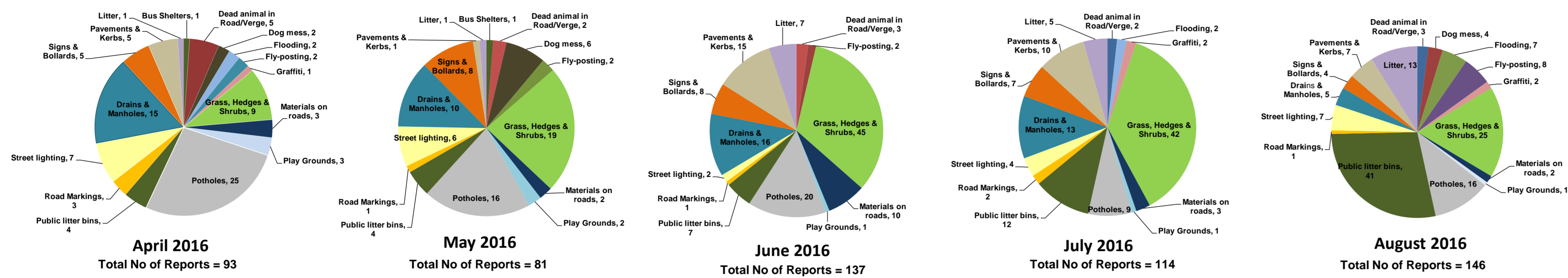
# Appendix B: My Wiltshire Statistics



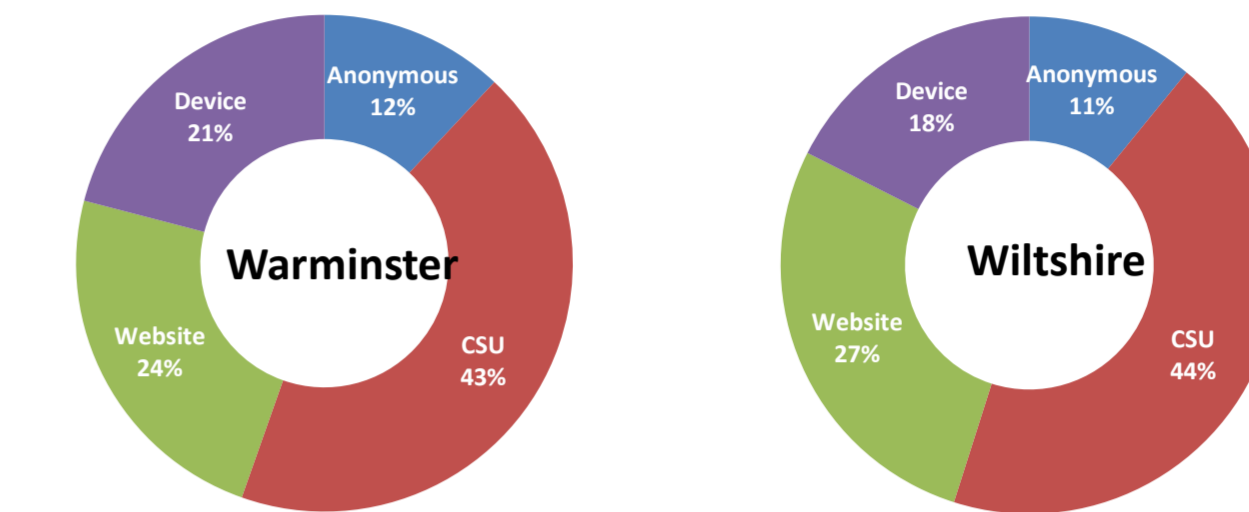
## Warminster Area Board



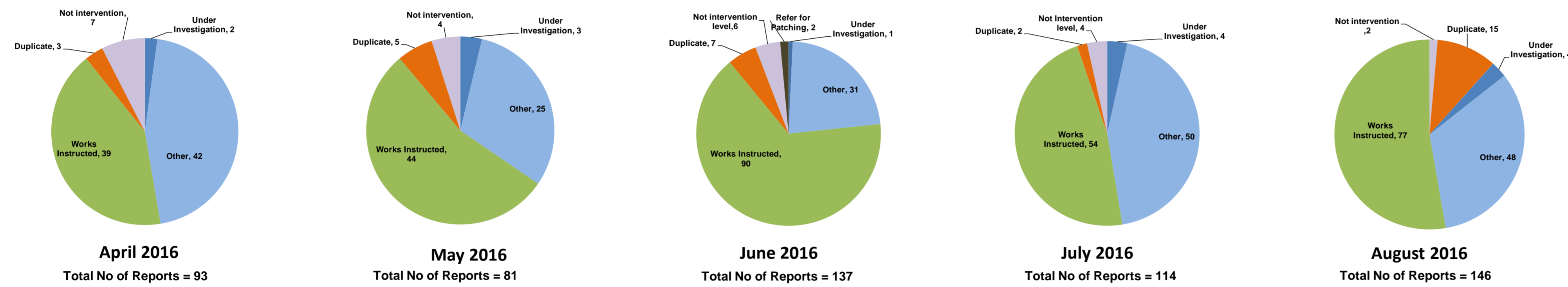
### Customer Reported Issues



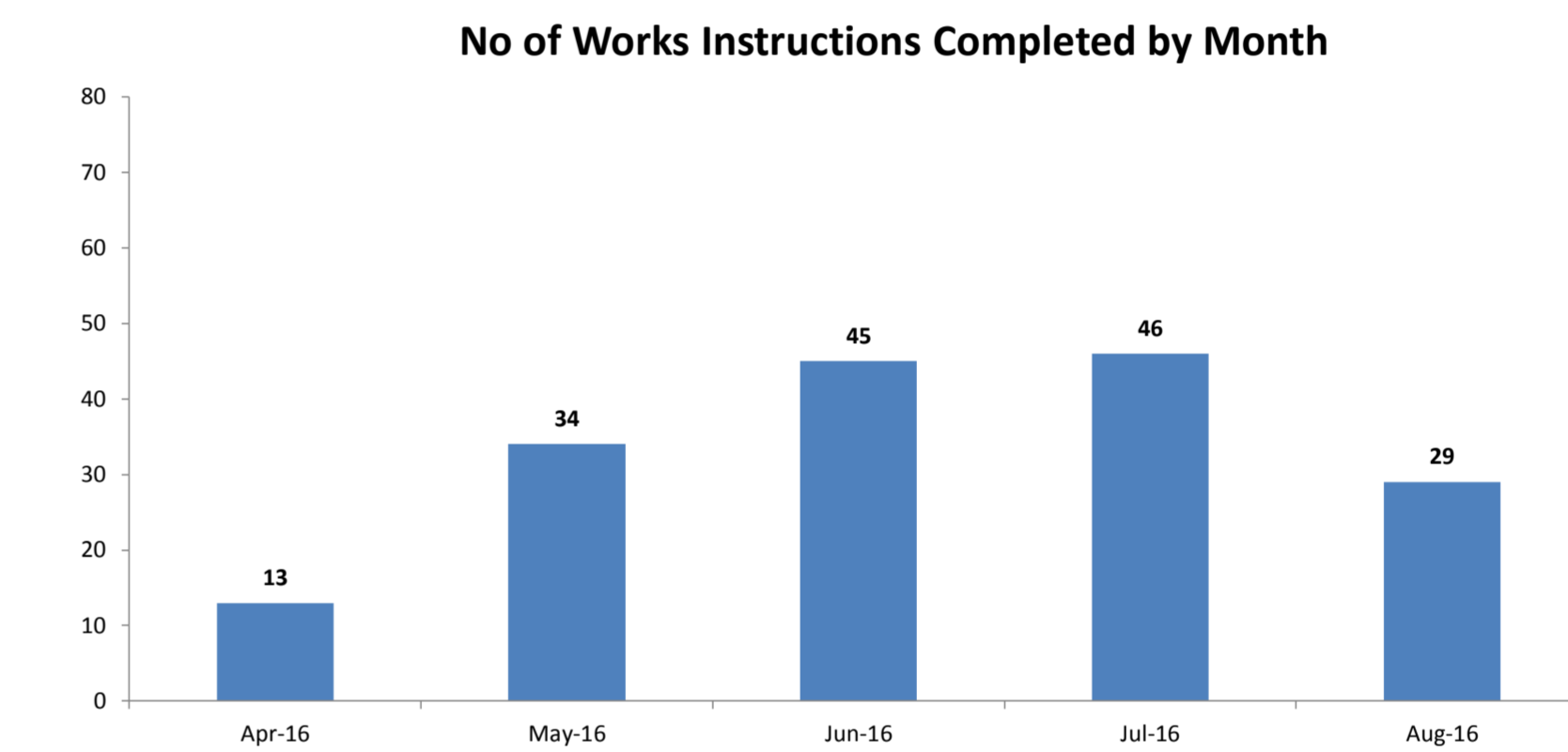
### Reporting Channels



### Customer Call Outcomes



### Completed in Month



### Safety Inspections

